



Event Sponsor

FAIRWAY

Independent Mortgage Corporation

ENTERTAINMENT SPONSOR



ART LOT
SPONSOR



AUTO SHOWCASE
SPONSOR



BANDSTAND
SPONSOR



CRAFT CORNER
SPONSOR



DAMON HOUSE
SPONSOR



FIRST AID
SPONSOR



FOOD COURT
SPONSOR



INFORMATION BOOTH
SPONSOR



KIDS' COURT
SPONSOR



KIDS' COURT
ENTERTAINMENT SPONSOR



MARKETPLACE
SPONSOR



PARADE
SPONSOR



FRIENDS OF HOLDEN DAYS

- Accurate Asphalt Paving
- Busy Bee Nursery & Landscape Construction
- Casella Waste Systems
- Cornerstone Bank
- Country Bank
- Devereux
- Holden Community Television
- Holden Home Modernizing, Inc.
- Janice Mitchell Real Estate
- LaPrade Advertising
- The Law Office of Melissa A. Gleick, Esq.
- The Manor/Draught House Bar & Grill
- McDonalds - Holden
- Monette Landscaping & Construction
- Mt. Wachusett Veterinary Hospital
- Pepsi-Cola Bottling Company of Worcester
- Peter Lukes, Holden Town Manager
- Miles Funeral Directors
- Nicholas Tretter, DDS
- Sarkisian Builders
- Seven Saws Brewing Company
- Sign Design by Farrar Press
- St. Francis Episcopal Church
- Sterling Village Skilled Nursing & Rehabilitation
- Traina & Traina Insurance Agency, Inc.
- The UPS Store
- Vintage Retriever
- Wachusett Area Chamber of Commerce
- The Willows at Worcester
- Window Designs, Etc.
- Wingspan Properties, LLC
- Wong Dynasty and Yankee Grill, Inc.
- WRTA

The Wachusett Area Chamber of Commerce
would like to thank its sponsors
for their generosity.

Holden Days would not be
possible without their support.

A Special Thank You to...

THE
Landmark

Special Thanks to our
Transportation Partners...



Main Street • Holden MA
August 25th, 2018 • 9:00 am to 3:00 pm



Decades by Dezzyne



Holdin' Back



Talla Rookh



Event Sponsor

FAIRWAY

Independent Mortgage Corporation

Entertainment Sponsor



Presented by



WACHUSETT AREA
CHAMBER OF COMMERCE



Event Sponsor

FAIRWAY

Independent Mortgage Corporation



GALE
FREE LIBRARY
Book Cellar Open
9am - 2pm

FIRST CONGREGATIONAL CHURCH

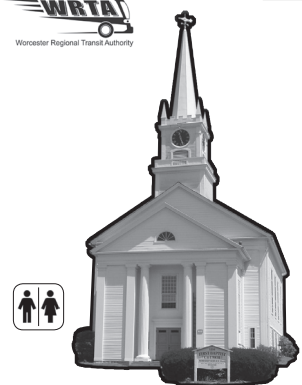
Giant Yard Sale

Burgers, Dogs,
Homemade Fries, Desserts

Boy Scout Pavilion



TOWN HALL



FIRST BAPTIST CHURCH

Bounce Toys
Soccer Kickball
Target

Refreshments



TOWN OF HOLDEN
MAIN ST RT 122A

Shuttle Buses

Provided by the WRTA

- 8:30 am – 4:00 pm
- Park at Wachusett Regional High School, 1401 Main St
- Continuous loop between High School and Holden Town Hall
- Departs High School on the hour and half hour
- Departs Town Hall 15 minutes before and after each hour
- Free and open to the public



TOWN OF HOLDEN
RESERVOIR ST RT 31

MARKETPLACE AT THE DAMON HOUSE

TENTS Aflac - Alex DeQuattro • Amcomm Wireless - Verizon Authorized Retailer • Central Mass Oil, Inc. • CMDunbar 13 Studios • Cornerstone Bank • Country Bank • Creative Floors • Crossfit Synthesis • Devereux • Discover Central Massachusetts • District Attorney Joseph D. Early, Jr. • Dodge Park/The Oasis at Dodge Park • Edward Jones • Gibbs Realty, Inc. • Hank Stolz - UNITY Radio • Harrington Oil • Hills Home Market • Holden Democratic Town Committee • Holden Garden Club • Holden Republican Town Committee • IA Financial Advisors • In A Heartbeat, LLC • Janice Mitchell, RE • JCS Enterprises • The Law Office of Melissa A. Gleick, Esq. • Leominster Credit Union • LuLaRoe • Massachusetts Department of Agricultural Resources • Miles Funeral Directors • Oriol Health Care • Rick McPhee Real Estate • Shaw Family Smiles General Dentist Practice • Sweetpea Friends of Rutland Animals, Inc. • Tina Mancini - Keller Williams Real Estate • Town of Holden • Wachusett Animal Hospital • Wachusett Area Chamber of Commerce • The Willows at Worcester • Worcester Institute for Senior Education (WISE)

OPEN AREA Back to Health Chiropractic • Bay State Savings Bank • Bee Wear • Brandolini Construction/Precision Home Remodeling • Cutco Cutlery • DeneleeThomas Norwex Independent Sales Consultant • Dream Vacations by Hoyt Vacation & Travel Services • eXcel Fitness • First Earth/Green World Vision • Forward Financial Services • Holden Community Garden • Huggable Snugglies • Lamacchia Realty • Leafilter North of Massachusetts, LLC • The Magic of Steve Charette • Michael Stone Portraits • NEWPRO Home Improvements • Owens Corning/Lux Renovations • Pepsi Cola Bottling Company of Worcester, Inc. • Pure Haven Essentials by Renee Carleen • Rescom Exteriors, Inc. • R.J. McDonald, Inc. • St. Francis Episcopal Church • Sterling Village • U.S. Coast Guard Auxiliary Flotilla 10-1 • Usborne Books & More • Wachusett Greenways

SPONSORED BY



MAIN STAGE ENTERTAINMENT

WITH EMCEE HANK STOLZ, UNITY RADIO 102.9 FM

10:00 am - 11:00 am	Holdin' Back
11:30 am - 1:00 pm	Decades by Dezyne
1:30 pm - 2:30 pm	Lalla Rookh

FOOD COURT

BREAKFAST, LUNCH & DESSERT
AT THE DAMON HOUSE

SPONSORED BY



- Baked Bakery
- Flip Flops Bar & Grill
- Holden Grange Shortcake Festival
- McDonalds
- Parrot Pizza
- Specialty Sandwich Company
- Sweets & Java
- Wong Dynasty



DAMON HOUSE

SPONSORED BY



INFO BOOTH

SPONSORED BY



Wachusett Area
Chamber of
Commerce

Scratch Ticket
Raffle Drawing

SPONSORED BY



HOLDIN' BACK



DECADES BY DEZYNE



LALLA ROOKH

STAGE

In the event of rain, the Main Stage entertainers will perform at the Town Hall.

Drawings & Giveaways

Holden Board of Selectmen

Holden CERT

Holden DPW

Holden Fire Dept

Holden Police Dept

Josh Thibodeau Helping
Hearts Foundation

Magician

MILES FUNERAL
HOME

HCTV TROLLEY STOPS

RUNNING CONTINUOUSLY FROM 9am - 3pm

- Friendly's
- Craft Corner
- Clock Tower
- Oriol Health Care
- Bascom Parkway/ Highland St
- St. Francis Church/ Phillips Rd



Giveaways &
Promotional Items

SEVEN SAWS
TAPROOM

Daily
Specials

MEOLA'S
ICE CREAM

FIRST AID STATION

SPONSORED BY



HOLDEN DAYS PARADE
9am

SPONSORED BY



WALGREENS

Water & Free Samples

AMCOMM WIRELESS,
VERIZON AUTHORIZED
RETAILER

Giveaways

NEW TO YOU

Summer Clearance
Sidewalk Sale

TALBOTS

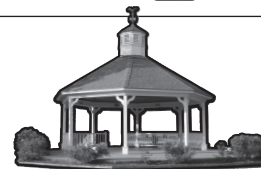
End of Season Sale

HOLDEN DAYS WILL BE SHOWN ON TAPE-DELAY ON
HOLDEN COMMUNITY TELEVISION'S CHANNEL 191.



CATCH A RIDE ON THE
ROAMING RAILROAD!

HOLDEN SENIOR CENTER
Friends of Holden Council on
Aging Indoor Flea Market



BANDSTAND

SPONSORED BY



11:00 am	Game On
12:00 pm	Post Road Chorus of Sweet Adelines International
1:00 pm	Worcester Men of Song Chorus

Sound Provided by Kevin
Krassopoulos

CRAFT CORNER

SPONSORED BY

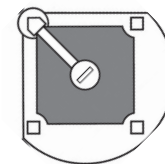


ART LOT

SPONSORED BY



FRIENDLY'S



AUTO SHOWCASE

SPONSORED BY



NEW LOCATION — BUBAR FIELD

KIDS COURT AT THE BUBAR FIELD

SPONSORED BY



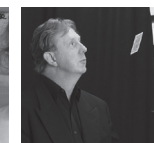
KIDS COURT ENTERTAINMENT

SPONSORED BY



Music Provided by Big Daddy's DJ Services

9:30 am	Meet and Greet with "Elsa" from Frozen
10:00 am	Magic of Steve Charette
10:30 am	Murphy Academy of Irish Dance Performance
11:00 am	Paula Meola Dance & Performing Arts – Demo Class with Trolls
12:30 pm	Paula Meola Dance & Performing Arts – Hip Hop Demo Class
1:00 pm	Magic of Steve Charette
1:30 pm	Family Dance Party with Big Daddy's DJ Services



ACTIVITIES Crafts, Dance Performances, Girls Scout Challenge, Demonstrations, Dunk Tank, Games, Giant Slide, Martial Arts, Music, Magician, Roaming Railroad, Slot Car Race Track, and More

PARTICIPANTS Be Like Brit Foundation, Inc. • Commerce Bank, a Division of Berkshire Bank • Cub Scout Troop 46 Snack Shack • Force Defense & Fitness • Girl Scouts of Central and Western MA • Herlihy Insurance • Holden Firefighters Association • Holden Girl Scouts • Holden Martial Arts • IA Financial Advisors • Little Gym of West Boylston • Next Level Up Academic Coaching • Reliant Medical Group • Roaming Railroad • Slot Car Race Track • Wachusett Montessori School • Worcester JCC • Worcester Pediatrics, PC



TOWN OF HOLDEN
MAIN ST RT 122A

Shuttle Buses

Provided by the WRTA

- 8:30 am – 4:00 pm
- Park at Dawson Elementary School, 155 Salisbury St
- Continuous loop between Elementary School and Friendly's
- Departs Elementary School on the hour and half hour
- Departs Friendly's 15 minutes before and after each hour
- Free and open to the public



Main St/Route 122A Westbound Traffic Detours

Main Street westbound closed from Woodland Rd to Lovell Rd

- **To Route 31 North** – Right onto Woodland Rd, right onto 31 North
- **To Route 31 South** – Right onto Woodland Rd, left onto 31 South
- **To Main St/Route 122A** – Right onto Woodland Rd, left onto Highland St, right onto Jamieson Rd, left onto Lovell Rd, right onto Main St/Route 122A